

Customer :

customer

Customer part :

customer part

Comment :

Comment

S1=2.17

S2=2.99

Tmax=462

Tp S2=501.0

PI=0.42

HI=127

Sample =1666.60

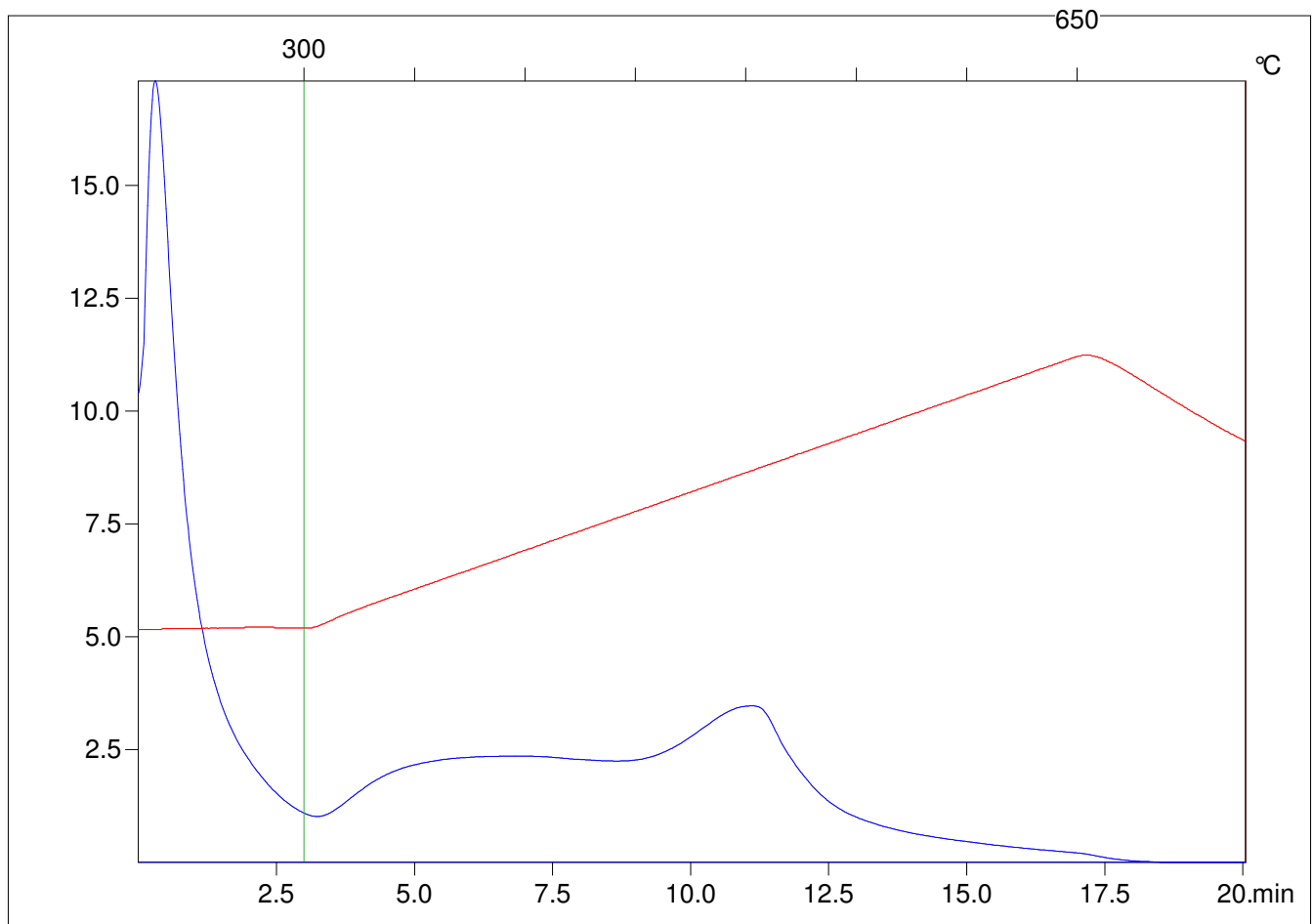
Method =Bulk Rock

Cycle=Basic

KFID(10*9)=1444

Qty =70.4

TOC=2.35



C:\VINC\PK1_1792\PK003.R00 : FID pyrolysis graphic

State

Pyro Status

Oxi Status